



SLIDE OUT SINK AREA (See Addition)

Maximize your counter space with our signature slide out sink design with portable quick disconnect waste tank.
 A three compartment sink can be added if desired.
 *Note-The cart will grow in **DEPTH** to 39" if **SLIDE OUT SYSTEM** is selected.

BUILT IN REFRIGERATION AREA (See Addition)

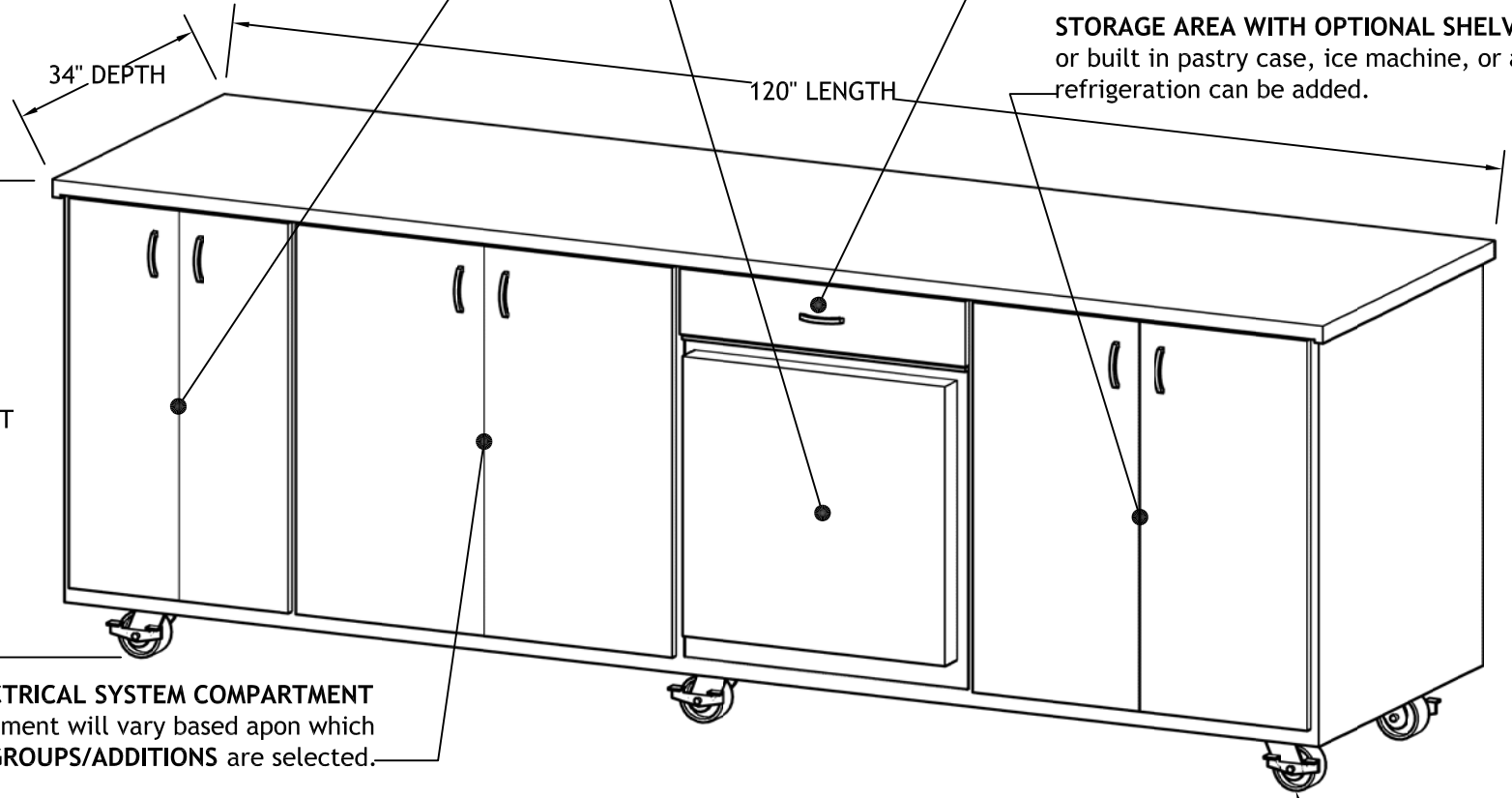
Stainless steel refrigeration allows baristas easy drink preparation and storage of perishables.

BUILT IN CUP HOLDERS AREA (See Addition)

Stainless steel cup holders allows baristas easy drink preparation.

STORAGE AREA WITH OPTIONAL SHELVING (See Addition)

or built in pastry case, ice machine, or additional refrigeration can be added.



WATER & ELECTRICAL SYSTEM COMPARTMENT

*Note-Equipment will vary based upon which **EQUIPMENT GROUPS/ADDITIONS** are selected.

10 FOOT CART DESCRIPTION

CART CONSTRUCTION-The base frame of carts are fabricated with 3/4" thick marine grade plywood.

INTERIOR OF CART-Laminated with a white Formica.

EXTERIOR OF CART-Choice of Formica or Wilsonart laminates to match their location's theme and/or personal preference.

WHEELS-A total of six 5 1/2"x2" swivel casters with locking ability.

COUNTER TOPS-3/4" thick marine grade plywood with 1 1/2" overhang around entire exterior of cart. Formica or Wilsonart laminates on top.

***OPTIONAL**-With 3" solid oak wood trim. (See Additions)

(6) 5 1/2" Tall Locking swivel wheels for easy transportation.